

# PHILIPS

Pillar double  
spotlight

Hue White Ambiance

Includes GU10 LED bulb

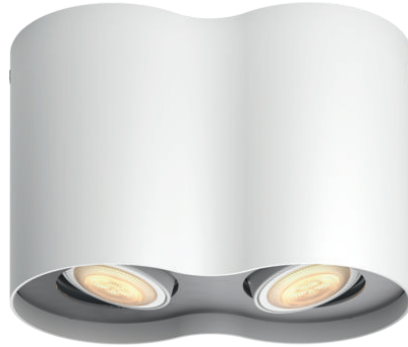
Bluetooth control via app

Includes dimmer switch

Add Hue Bridge to unlock more



8719514338463



## Easy smart lighting

Use the Philips Hue White Ambiance Pillar double spotlight in white to get warm-to-cool white light in any room of your home. Control instantly with Bluetooth or the included Hue dimmer switch or unlock the full suite of smart lighting features with the Philips Hue Bridge.

### Comfort dimming

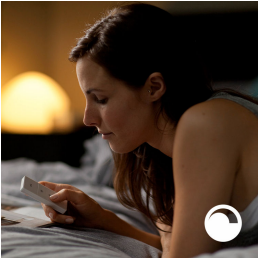
- Pair with a wireless dimmer switch for easy wireless control

### Easy smart lighting

- Control up to 10 lights with the Bluetooth app
- Control lights with your voice\*
- Set the right mood with warm to cool white light
- Get the perfect light recipes for your daily activities
- Unlock full suite of smart light features with Hue Bridge

# Highlights

## Installation-free dimming



Control your Philips Hue lights directly with the wireless dimmer switch. You can turn the lights on and off, switch between the four different light recipes and dim to the right brightness. Installation is quick, simple and hassle-free. All you have to do is pair the switch with the lamp and place the switch anywhere in your home. It's that easy.

## Control up to 10 lights with the Bluetooth app



With the Hue Bluetooth app, you can control your Hue smart lights in a single room of your home. Add up to 10 smart lights and control them all with just the touch of a button on your mobile device.

## Control lights with your voice\*



Philips Hue works with Amazon Alexa and the Google Assistant when paired with a compatible Google Nest or Amazon Echo device. Simple voice commands allow you to control multiple lights in a room, or just a single lamp.

## Set the right mood with warm to cool white light



These bulbs and light fixtures offer different shades of warm to cool white light. With complete dimmability from bright to low nightlights, you can tune your lights to the perfect shade and brightness of light for your daily needs.

## Get the perfect light recipes for your daily activities



Make your day easier and more pleasant with four pre-set light recipes handcrafted especially for your daily tasks: Energise, Concentrate, Read and Relax. The two cool-toned scenes, Energise and Concentrate, help you get going in the morning or keep your focus, while the warmer scenes of Read and Relax help support comfortable reading or calm a busy mind.

## Unlock full suite of smart light features with Hue Bridge



Add a Hue Bridge (sold separately) to your smart lights to experience the full suite of Philips Hue features. With a Hue Bridge, you can add up to 50 smart lights to control throughout your home. Create routines to automate your entire smart home lighting set-up. Control your lights while away from home or add accessories such as motion sensors and smart switches.

# Specifications

## Design and finishing

- Colour: white
- Material: metal

## Extra feature/accessory incl.

- Four light recipes: Yes
- Adjustable spot head: Yes
- Dimmable with remote control: Yes
- Hue Switch: Yes
- Hue Switch Included: Yes
- LED lamp(s) included: Yes
- Perfectly suited for creating ambience: Yes
- Upgradeable with Philips Hue Bridge: Yes
- ZigBee Light Link: Yes
- Centrepiece: No

## Miscellaneous

- Especially designed for: Living Room and Bedroom
- Style: Contemporary
- Type: Spot light

## Product dimensions and weight

- Height: 12 cm
- Length: 19.3 cm
- Net weight: 1.775 kg
- Width: 10.3 cm

## Service

- Warranty: 2 year(s)

## Technical specifications

- Lifetime up to: 15,000 h
- Total lumen output fixture (hidden): 700 lm
- Lumen output bulb included: 350 lm
- Light source equivalent to traditional bulb of: 50 W
- Total lumen output fixture: 700 lm
- Bulb technology: LED, 230 V
- Light colour: 2200-6500 Hue White Ambiance
- Mains power: 50-60 Hz
- Fixture dimmable: Yes
- LED: Yes
- Built-in LED: No
- Number of bulbs: 2
- Fitting/cap: GU10
- Wattage bulb included: 10 W
- Maximum wattage replacement bulb: 5.5 W
- IP code: IP20
- Class of protection: II - double insulated
- Lumen output at 2,700 K (out-of-the-box setting): 500 lm
- Lumen output at 4000K: 700 lm
- Replaceability of light source: Replaceable LED light source by end-user

## Packaging dimensions and weight

- EAN/UPC - product: 8719514338463
- Net weight: 2.025 kg
- Gross weight: 2.355 kg
- Height: 14.000 cm
- Length: 17.600 cm
- Width: 21.900 cm
- Material number (12NC): 929003046601



Issue date: 2021-09-13  
Version: 0.262

© 2021 Signify Holding. All rights reserved. Signify does not give any representation or warranty as to the accuracy or completeness of the information included herein and shall not be liable for any action in reliance thereon. The information presented in this document is not intended as any commercial offer and does not form part of any quotation or contract, unless otherwise agreed by Signify. Philips and the Philips Shield Emblem are registered trademarks of Koninklijke Philips N.V.

[www.lighting.philips.com](http://www.lighting.philips.com)